

# *mody* ELECTRIC SUBMERSIBLE SEWAGE PUMP

## MS 6152/6202 SERIES

SUBMERSIBLE SEWAGE PUMPS FOR  
STATIONARY WET PIT  
INSTALLATION  
(P TYPE)  
AND  
MOBILE WET PIT INSTALLATION (S  
TYPE)

### Model MS 6152

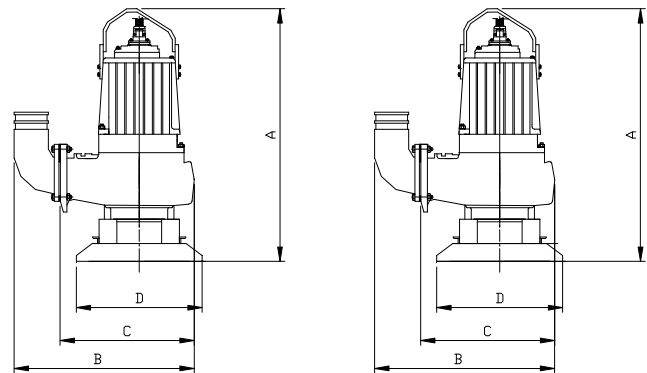
6" (150mm) Flange or Hose  
15 HP (11kW)  
(Med. Volume - Med. Head)

### Model MS 6202

6" (150mm) Flange or Hose  
8" (200mm) Optional  
20 HP (15kW)  
(Med. Volume - Med. Head)



PORTABLE INSTALLATION



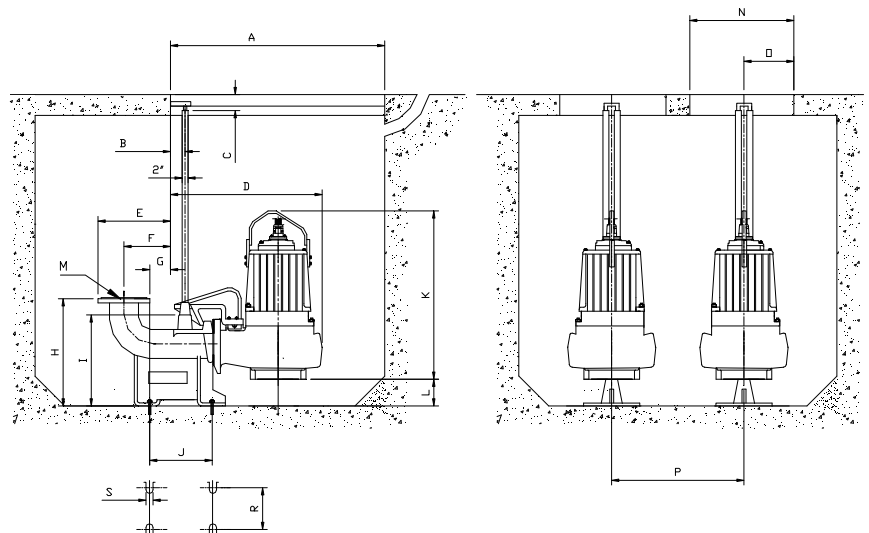
MS-6152

MS-6202

A	B	C	D	A	B	C	D
1155	800	580	600	1155	800	580	600
(45.4")	(31.4")	(22.8")	(23.6")	(45.4")	(31.4")	(22.8")	(23.6")

STATIONARY (SEMI PERMANENT) WET PIT INSTALLATION

	A	B	C	D	E	F	G	H	I	J	K	L	MØ	N	Ø	P	R	S
MS6152	1200	85	130	765	390	215	139	510	435	250	950	125	150	850	425	950	200	23
MS6202	1200	85	130	765	390	215	139	510	435	250	950	125	150	850	425	950	200	23

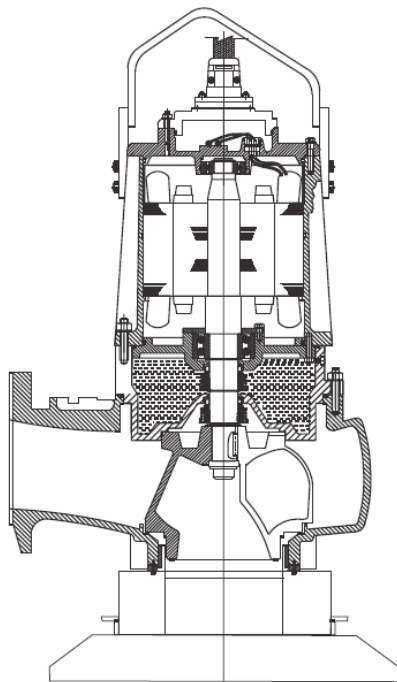


**Mody Pumps® Inc.**  
2166 Zeus Court, Bakersfield, CA 93308. USA  
Tel.: (661) 392-7600 • Fax: (661) 392-7601  
<http://www.modypump.com>  
E-mail: [sales@modypump.com](mailto:sales@modypump.com)

# mody

## ELECTRIC SUBMERSIBLE SEWAGE PUMP

**MS-6152 15HP (11kW), MS-6202 20HP (15kW)**



## MS-6100/MS-6200 SERIES

### MATERIALS OF CONSTRUCTION AND ENGINEERING DATA

MODEL	MS 6152	MS 6202
HP/kW	15/11	20/15
RPM 60Hz/50Hz	1750/1450	1750/1450
Max. Amps (FLA @ 460v/400v)	20/23	28/32
Solids Handling: inches/mm	4"/100	4"/100
Weight - P Type (approx.) Lbs./Kg	814/370	836/380
Weight - S Type (approx.) Lbs./Kg	660/300	682/310
Impeller Type	Channel	Channel
Max. Temperature of Pumped Fluid:	104°F/40°C	104°F/40°C
Max. Starts/Stop Per Hour:	15	15
Max. Submergence:	33'/10m	33'/10m

#### MOTOR

4-pole induction **continuous rated** motor with squirrel cage rotor. Bi-metallic switches (thermals) embedded in stator winding to protect against overheating. Stator insulation class 'H' (180°C)

#### POWER SUPPLY

3 phase, 50/60 Hz, AC Supply. Available in any voltage frequency combination. (208/220/230/380/415/460/575/1000V)

#### BALL BEARINGS

The rotor shaft is carried in two ball bearings. Double row contact lower bearing is capable of carrying high thrust and radial loads. Upper bearing is a deep groove single row oversized bearing. The bearings are enclosed with high temperature grease-containing special Anti-corrosion additive.

#### POWER CABLE

Waterproof/oil proof, rubber-insulated, neoprene-sheathed copper conductor flexible cable, 50ft. (15m) length standard. Type SOOW in North America, EPR in the Middle East and HO7RN in the EU. (4 core std., 7 core optional)

#### SHAFT SEALS

Compact Tandem Tungsten Carbide/Tungsten Carbide Upper & Lower Mechanical seals minimize shaft overhang and deflection maximizing mean time between service intervals. Moisture sensor available to detect progressive seal wear.

#### HYDRAULICS

Single Channel Impellers, Hydrodynamically balanced with improved flow pattern contribute to a virtually clog-free pump.

#### COOLING

Integral cast cooling fins on motor casing with large surface area ensure efficient heat dissipation and low temperature rise. Shrink fitted stators and short shaft overhang facilitate cooling.

#### MATERIALS OF CONSTRUCTION

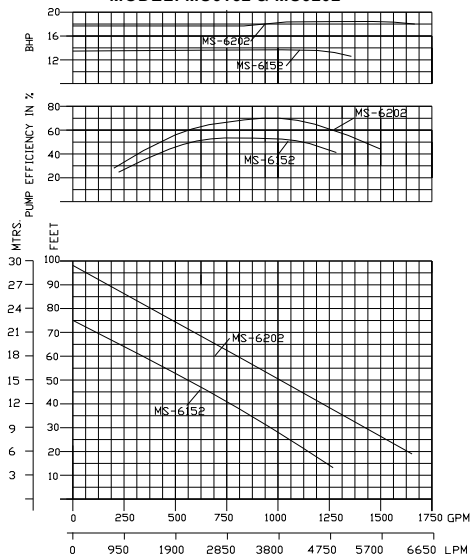
Casing:	Cast Iron ASTM A48 Class 30 (FG 220)
Impeller:	Cast Iron ASTM A48 Class 30 (FG 220)
Shaft:	431 Stainless Steel
Hardware:	304 Stainless Steel
"O" Rings:	Nitrile Rubber
Mech. Seals:	TC/TC (Upper & Lower)

#### SURFACE TREATMENT

Primer with Epoxy and subsequently coated with black chloric paint for maximum corrosion resistance. pH range 6 - 11.

### PERFORMANCE CURVES

MODEL: MS6152 & MS6202



Due to continuous product development, specifications are subject to change without notice.

03.10.Rev.0